



U.S. Department
of Transportation
Federal Highway
Administration

SafetyEDGE
Your Angle for Reducing Roadway Departure Crashes



SAFETY EDGE

Module 3: Frequently Asked Questions of the EDC Initiative

Level of Audience: Engineers, Project Managers and Municipal Authorities

Instructors: Dr. Benjamín Colucci, Eng. Juan C. Rivera, Eng. Ana Torres, Eng. Alvin Gutiérrez

Mr. Moisés Estrada, Eng. Eugenio Montes & Eng. Freddie Salado

Duration: 45 Minutes



Acronyms

AAA	American Automobile Association
AASHTO	American Association of State Highways and Transportation Officials
DTOP	Department of Transportation and Public Works
DUI	Driving Under Influence
EDC	Every Day Counts
EIS	Environmental Impact Statements
FARS	Fatal Analysis Reporting System
FAQ's	Frequently Asked Questions
FHWA	Federal Highway Administration
NHTSA	National Highway Traffic Safety Administration
OGFC	Open Graded Friction Course
PCC	Portland Cement Concrete
PRHTA	Puerto Rico Highway and Transportation Authority
PRLTAP	Puerto Rico Local Technical Assistance Program
Q&A	Questions and Answers
RAP	Reclaimed Asphalt Pavement
RC	Ramp Champ
RDG	Roadside Design Guide
ROR	Run Off the Road
SE	Safety Edge
SWM	Shoulder Wedge Maker
TRB	Transportation Research Board
WMA	Warm Mix Asphalt



Learning Outcomes

1. Discuss the doubts presented by the audience.
2. Clarify the doubts presented by the audience.
3. Share knowledge and field experiences in Puerto Rico to clarify the audience doubts.



FAQ's Categories

Frequently Asked Questions related to Safety Edge Technology grouped in 5 categories:

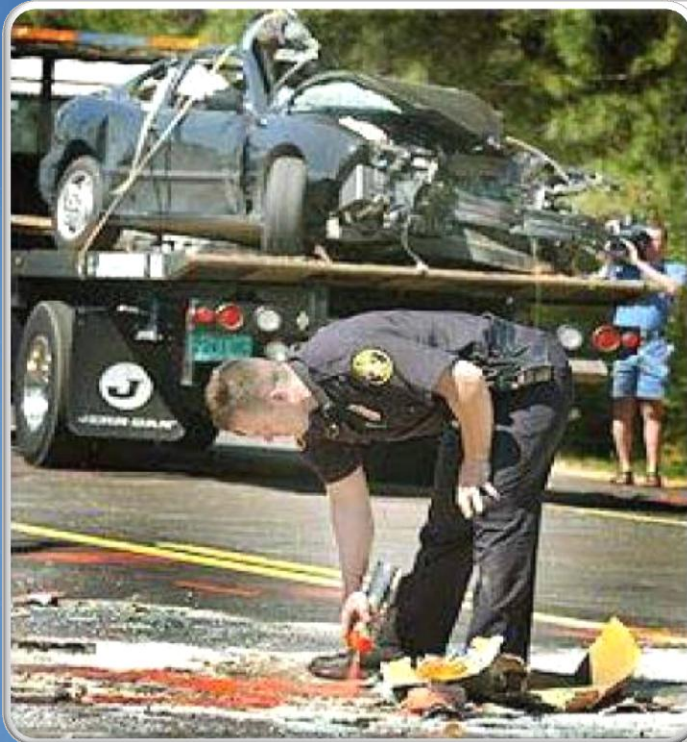
- A. Design
- B. Installation
- C. Construction
- D. Costs
- E. Measurement



Frequently Asked Questions (FAQ's)

SafetyEDGE
Your Angle for Reducing Roadway Departure Crashes

A.1 Why should I change my current process to include the Safety Edge?



Adapted from: The Safety Edge: Frequently Asked Questions
<http://www.fhwa.dot.gov/everydaycounts/>



Frequently Asked Questions (FAQ's)

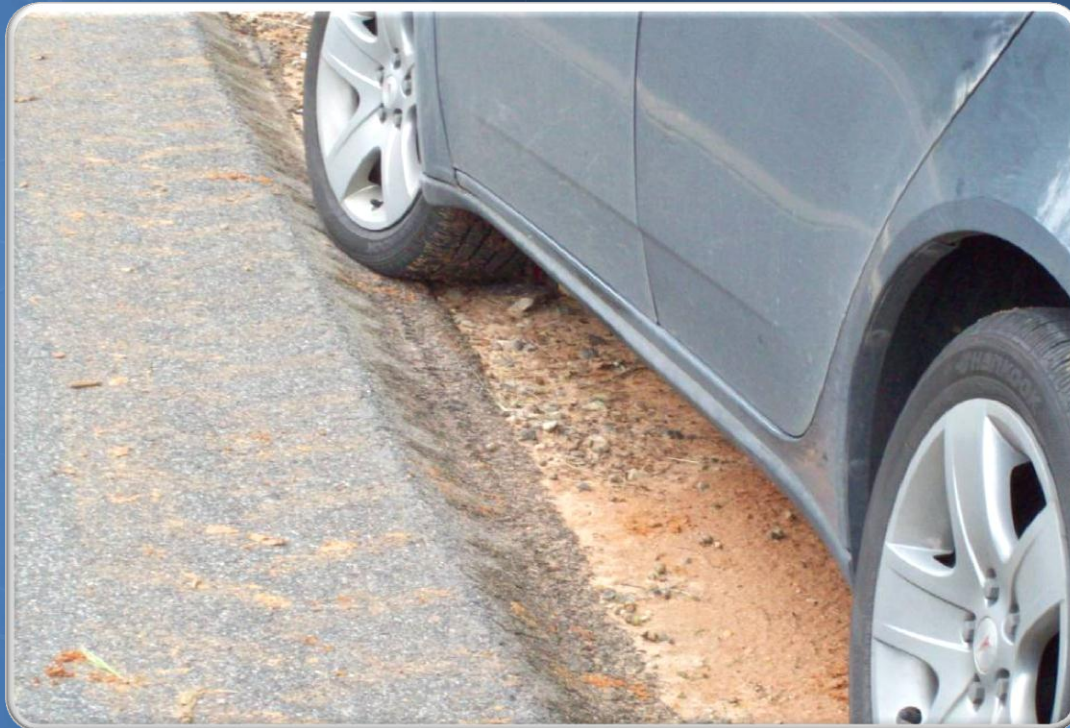
A.2 How does the Safety Edge compare with the conventional asphalt paving processes?





Frequently Asked Questions (FAQ's)

A.3 Is the toe of the Safety Edge durable? Does the toe break or wedge come apart over a period of time?





Frequently Asked Questions (FAQ's)

A.4 Do I need to change my mix design or layer thickness to use the Safety Edge?





Frequently Asked Questions (FAQ's)

SafetyEDGE
Your Angle for Reducing Roadway Departure Crashes

A.5 Does the Safety Edge has to be placed on gravel?



Adapted from: The Safety Edge: Frequently Asked Questions
<http://www.fhwa.dot.gov/everydaycounts/>



Frequently Asked Questions (FAQ's)

SafetyEDGE
Your Angle for Reducing Roadway Departure Crashes

A.6 Does the Safety Edge affect finished ride quality?





Frequently Asked Questions (FAQ's)

SafetyEDGE
Your Angle for Reducing Roadway Departure Crashes

A.7 If I use the Safety Edge, do I still need to pull the shoulders back up to the new pavement height?





Frequently Asked Questions (FAQ's)

A.8 If the road has a paved shoulder, is there still a benefit to installing the Safety Edge?





Frequently Asked Questions (FAQ's)

SafetyEDGE
Your Angle for Reducing Roadway Departure Crashes

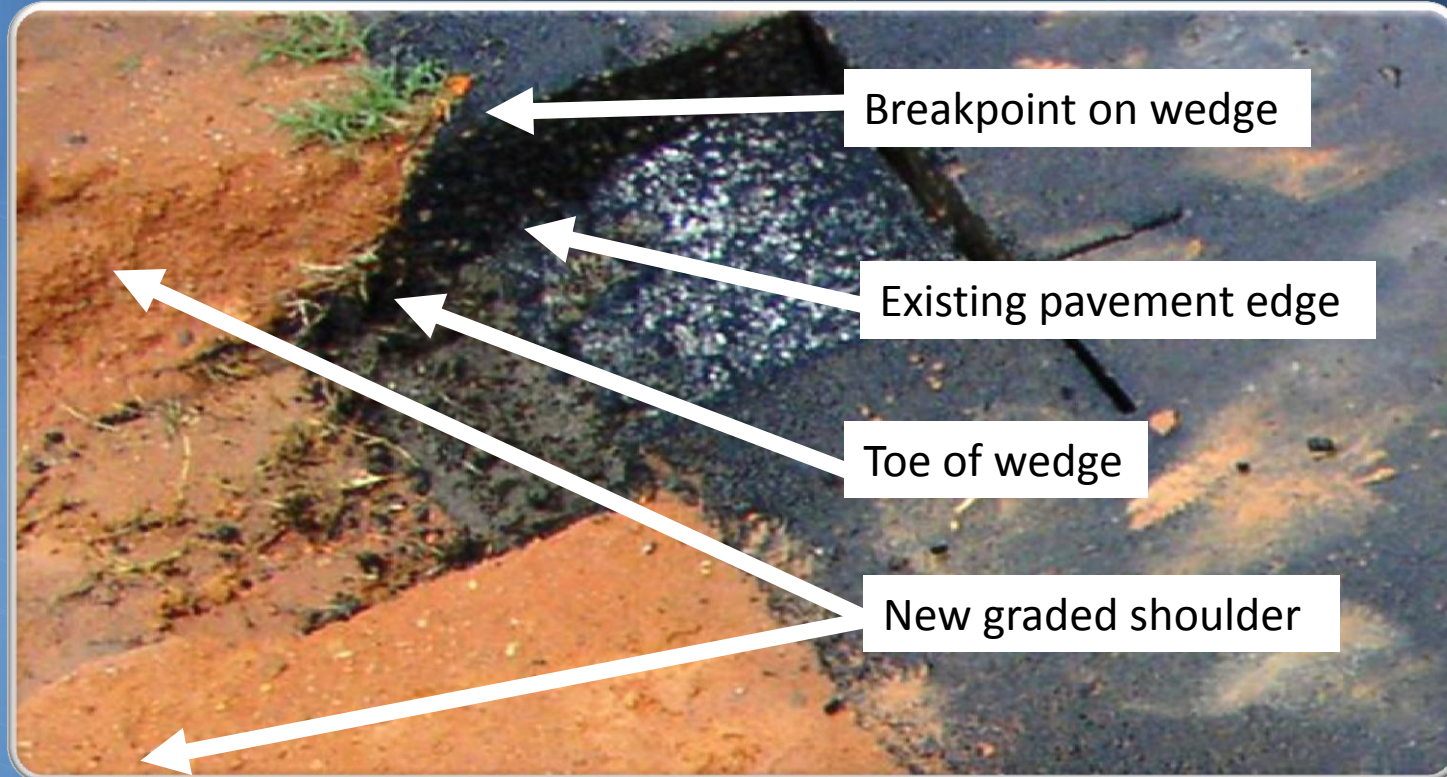
B.1 Can the Safety Edge be installed with Portland Cement Concrete (PPC)?





Frequently Asked Questions (FAQ's)

C.1 Will the Safety Edge hold the shoulder material level with the roadway surface?





Frequently Asked Questions (FAQ's)

SafetyEDGE
Your Angle for Reducing Roadway Departure Crashes

C.2 How does the Safety Edge affect pavement quality and structure?



Adapted from: The Safety Edge: Frequently Asked Questions
<http://www.fhwa.dot.gov/everydaycounts/>



Frequently Asked Questions (FAQ's)

C.3 Do I need to modify my paving process to install the Safety Edge on asphalt?





Frequently Asked Questions (FAQ's)

C.4 When we constructed sections with tapered edge, the wedge often broke off or cracked. How is the Safety Edge different?

Condition After **6** Years of Service



Without Safety Edge



With Safety Edge



Frequently Asked Questions (FAQ's)

C.5 How do you pave under the guardrail with the Safety Edge shoe attached?





Frequently Asked Questions (FAQ's)

SafetyEDGE
Your Angle for Reducing Roadway Departure Crashes

D.1 How much will the Safety Edge cost per mile?





Frequently Asked Questions (FAQ's)

SafetyEDGE
Your Angle for Reducing Roadway Departure Crashes

E.1 What if a roadway only has limited clear zone available?





Frequently Asked Questions (FAQ's)

SafetyEDGE
Your Angle for Reducing Roadway Departure Crashes

E.2 If my crash data does not indicate we have a pavement edge drop-off problem, do I still need to install the Safety Edge?





Frequently Asked Questions (FAQ's)

E.3 What type of crash reductions can I expect from the Safety Edge?





Frequently Asked Questions (FAQ's)

E.4 How do I obtain the commercially available device?

Devices that are known to create a quality edge are available from:

Transtech Systems, Inc.
1594 State Street
Schenectady, NY 12304
1-800-724-6303
518-370-5558
<http://www.transtechsys.com>

Advant-Edge Paving Equipment LLC
1197 Hillside Avenue, Suite B47
Niskayuna, NY 12309
518-280-6090
<http://www.advantedgepaving.com>



Review: Learning Outcomes

1. Discuss the doubts presented by the audience.
2. Clarify the doubts presented by the audience.
3. Share knowledge and field experiences in Puerto Rico to clarify the audience doubts.



References



1. All the information provided in this presentation has been published by Federal Highway Administration.
2. To learn more about EDC, visit:
<http://www.fhwa.dot.gov/everydaycounts>





Acknowledgements

This module was made possible through the collaboration of Eng. Juan C. Rivera, Eng. Ana L. Torres, Eng. Alvin Gutiérrez, Eng. Freddie Salado, Dr. Benjamín Colucci, Ms. Melvies Rodríguez, Mss. Leilany Benejam and Mr. Josué Ortiz.



End of Module #3: Questions & Answers

